



# Oxford City Branch Hugh's News

Produced fortnightly by Paul, Jonathan and Hugh, plus contributions from other ringers.

Monday 1<sup>st</sup> July 2013



**(Sorry this edition is a week late... we decided to hold it over to cover this weekend's Summer Outing!)**

## Hampshire Outing – 29<sup>th</sup> June 2013

Given the redolence of this northerly fringe of Hampshire it should have come as no surprise that we found ourselves in the ethereal company of numerous celebrated novelists, poets and biographers, as well as the odd infamous example! We did not have to wait to reach the persuasions of **Chawton** before finding ourselves immersed in literary topsy. The bells at **Holybourne**, cast in 2009, are all inscribed and dedicated to local luminaries such as Jane Austen, Elizabeth Gaskell, Alfred Munnings, Edmund Spenser, Izaak Walton, and Rev. Gilbert White. Much of the funding for the new bells was provided by Britain's most famous gardener, **Alan Titchmarsh**, who lives close by and who we saw in a vintage

**The Church of the Holy Rood Holybourne**

↪ The ring of eight bells in this tower were cast at the Whiteshapel Bellfoundry in 2009 and hung by Whites of Appleton. ↪ They were rung for the first time on Friday 16<sup>th</sup> October that year. The former ring of three was hung stationary above the new bells, and continue to be sounded by the clock. ↪ On 11<sup>th</sup> October, before they were hung, each bell was blessed and named.

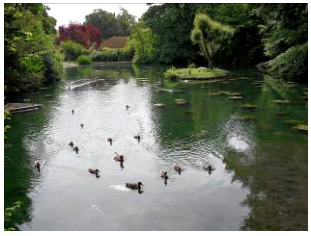
The details of the bells are as follows:

Bell	Weight	Inscription
Treble	2-2-19	Jane Austen Writer 1775-1817
2	2-3-7	Elizabeth Gaskell Writer 1810-1865
3	2-3-24	William Curtis Botanist 1746-1799
4	3-1-4	Alfred Munnings Painter 1878-1959
5	3-2-13	Edmund Spenser Poet 1552-1599
6	4-0-11	Edward Thomas Poet 1870-1917
7	5-1-14	Izaak Walton Angler & Biographer 1593-1633
Tenor	6-3-16	Rev Gilbert White Curate & Naturalist 1720-1793

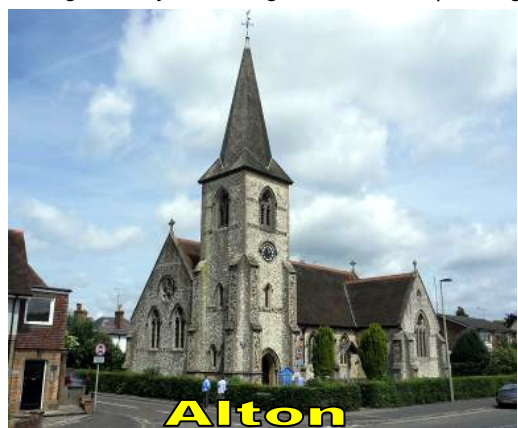
The bells are tuned to the key of B



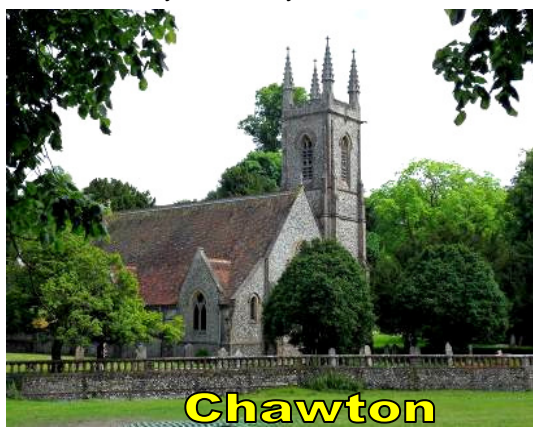
**Holybourne**



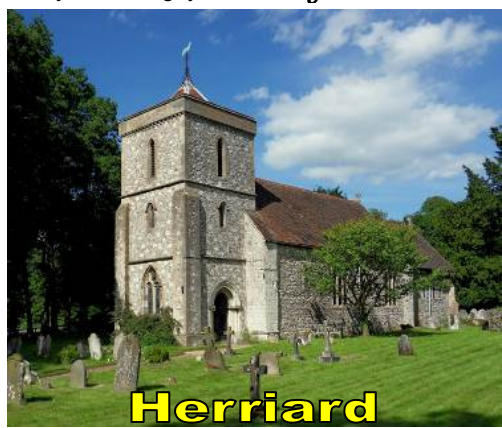
car outside the church on our arrival! On the week that a heavy hint was dropped by the retiring Governor of the Bank of England that **Jane Austen** is favourite to feature on the new £10 note as it evolves from Charles Darwin, it was entirely appropriate that we should be ringing at the church where the Austen family attended worship. After a delayed Spring and early Summer the horticulture was a panorama of teasingly demure efflorescence right across the spectrum to being in its full regalia. The fine weather afforded us the opportunity to enjoy an excellent lunch in the pub garden and the added bonus of spotting a selection of the rolling stock crossing the viaduct on the "Watercress Line" which is the marketing name for the Mid-Hants heritage railway. The undoubted aforementioned local miscraen in the field of humanities was Elizabethan poet George Putterham who resided at **Herriard House** and whose predilections would best be euphemistically described in broadcasting terms as for well after "the watershed". Merely spending a few hours ringing on the pleasurable bells and languorously observing this hotbed of promulgation it was easy to see why the locale has such a history of waxing lyrical! *Hugh Deam.*



**Alton**



**Chawton**



**Herriard**

**(Congratulations to Hugh on behalf of all those of us who went, for an excellent trip. Very well planned! Paul.)**

### Dates for your Diary

Full details from Hugh at: [hugh.deam at btinternet.com](http://hugh.deam@btinternet.com) or Jonathan at: [jonathan at cresshull.co.uk](http://jonathan@cresshull.co.uk)

- Wednesday 3<sup>rd</sup> July** Advanced Practice at Headington (8). 8.00pm-9.00pm  
(All experienced ringers, and those wishing to ring more advanced methods, are welcome to attend)
- Saturday 13<sup>th</sup> July** Branch Practice at Garsington - first Practice on the newly rehung bells. 6.30pm-8.00pm
- Saturday 31<sup>st</sup> August** General Practice with the Ringers at Kidlington (8). 11.00am-12.15pm

### Local Practice Nights

- Mondays:** St Aldates (6), Garsington (6)
- Tuesdays:** Kidlington (8), Horspath (6).
- Wednesdays:** Headington (8), Iffley (6).
- Thursdays:** St Giles (8), Wolvercote (6), Stanton St John (5), Cowley (6).
- Fridays:** Old Marston (6), Wheatley (6), North Hinksey (6) (6.30-7.30).

For more details go to the Oxford City Branch website: [www.oxfordcitybranch.org.uk](http://www.oxfordcitybranch.org.uk)

Any information or photographs for inclusion in *Hugh's News* please email me: [paulclucas at hotmail.co.uk](mailto:paulclucas@hotmail.co.uk)